

**RESOLUTION NO. 07-89**

**RESOLUTION CREATING RURAL SPECIAL IMPROVEMENT MAINTENANCE  
DISTRICT KNOWN AS R.S.I.D. #772M  
(LONG VIEW SUBDIVISION 2<sup>ND</sup> FILING)**

WHEREAS, the Board of County Commissioners of Yellowstone County, Montana, have been presented with a valid petition to create a Rural Special Improvement Maintenance District which shall be known as R.S.I.D. #772M for LONG VIEW Subdivision 2<sup>ND</sup> FILING, described in Exhibit B as Lots 1 through 24 Block 1; and Lots 1 through 18 Block 2; all of LONG VIEW Subdivision 2<sup>ND</sup> FILING and more particularly shown in Exhibit A (map) and,

WHEREAS, under MCA 7-12-2102(2), a petition was presented to create a rural special improvement district that contains the consent of all (100%) of the owners of property to be included in the district;

WHEREAS, the Board of County Commissioners finds, determines and declares:

1. That the public interest or convenience requires the creation of a Rural Special Improvement Maintenance District as hereinafter described;

2. That the costs of providing for weed control, and fire storage tank maintenance shall be borne by owners of the property included within the boundaries of the Rural Special Improvement Maintenance District with all existing and future lots being assessed on a per lot basis (Exhibit C);

3. That the purpose of forming the District is to provide for weed control and fire storage tank maintenance;

4. That the Commissioners have been presented with a valid Petition to create the proposed District;

NOW, THEREFORE, BE IT RESOLVED by the Board of County Commissioners of Yellowstone County as follows:

1. The Commissioners have acquired jurisdiction to create a Rural Special Improvement Maintenance District No. 772M to provide for weed control and fire storage tank maintenance within the district. The estimated costs shown (see Exhibit D and D1) do not preclude other eligible expenditures for weed control and fire storage tank maintenance.

2. All of the costs of the District shall be assessed equally on a per lot basis for all existing and future lots (see Exhibit C). The boundaries of this District are shown on the map attached as Exhibit A and described in Exhibit B. The method of assessment is shown in Exhibit C.

3. The number of the Rural Special Improvement Maintenance District thereof shall be **No. 772M.**

4. All lots will benefit from proposed R.S.I.D. and shall be assessed for maintenance. All lots will be assessed an amount based upon the total cost of the applicable maintenance activity.

5. The Commissioners desire that an Ad Hoc Committee be appointed to make recommendations to the Commissioners with regard to the need for assessments to be made for the maintenance and the amount of the assessments, and how the assessments should be spent. The Commissioners ask that the Petitioners submit a list of some individuals who are willing to serve on the Ad Hoc Committee.

PASSED AND ADOPTED by the Board of County Commissioners of Yellowstone County, Montana, this 21 day of September, 2007.

Board of County Commissioners  
Yellowstone County, Montana

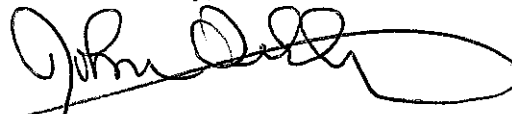
(SEAL)



James E. Reno, Chair



Bill Kennedy, Member



John Ostlund, Member

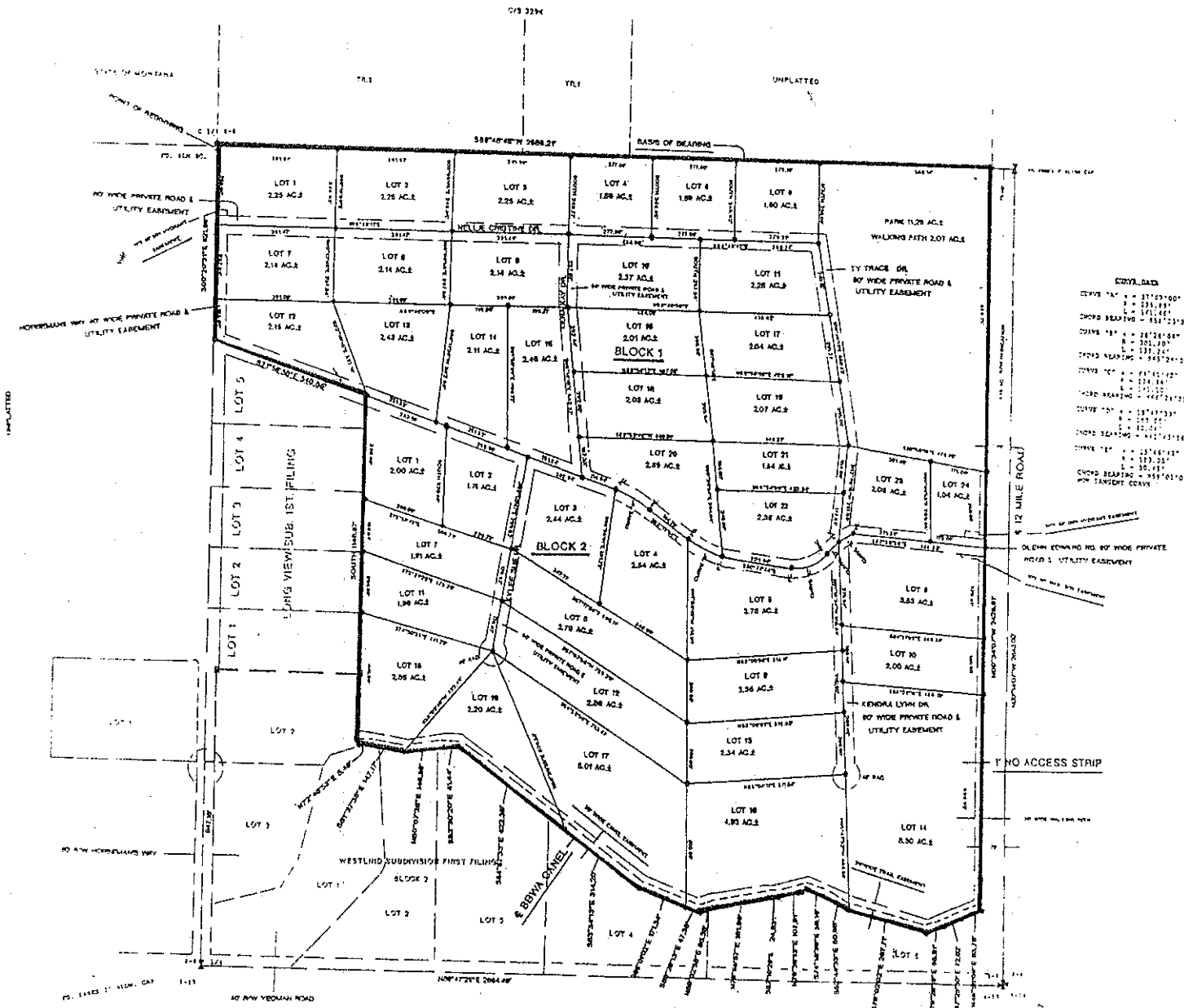
ATTEST:



Tony Nave  
Clerk and Recorder

# EXHIBIT A

## LONG VIEW SUBDIVISION 2ND FILING



**COOR. DATA**

Curve 14" = 311.221000'	
Curve 15" = 231.881'	
Curve 16" = 281.210000'	
Curve 17" = 281.210000'	
Curve 18" = 281.210000'	
Curve 19" = 281.210000'	
Curve 20" = 281.210000'	
Curve 21" = 281.210000'	
Curve 22" = 281.210000'	
Curve 23" = 281.210000'	
Curve 24" = 281.210000'	
Curve 25" = 281.210000'	
Curve 26" = 281.210000'	
Curve 27" = 281.210000'	
Curve 28" = 281.210000'	
Curve 29" = 281.210000'	
Curve 30" = 281.210000'	
Curve 31" = 281.210000'	
Curve 32" = 281.210000'	
Curve 33" = 281.210000'	
Curve 34" = 281.210000'	
Curve 35" = 281.210000'	
Curve 36" = 281.210000'	
Curve 37" = 281.210000'	
Curve 38" = 281.210000'	
Curve 39" = 281.210000'	
Curve 40" = 281.210000'	
Curve 41" = 281.210000'	
Curve 42" = 281.210000'	
Curve 43" = 281.210000'	
Curve 44" = 281.210000'	
Curve 45" = 281.210000'	
Curve 46" = 281.210000'	
Curve 47" = 281.210000'	
Curve 48" = 281.210000'	
Curve 49" = 281.210000'	
Curve 50" = 281.210000'	

# **EXHIBIT B**

## **PETITION TO ESTABLISH A RURAL SPECIAL IMPROVEMENT DISTRICT (RSID)**

### **SECTION B LEGAL DESCRIPTIONS**

#### **PROPERTY LEGAL DESCRIPTIONS**

**LONGVIEW SUBDIVISION SECOND FILING INCLUDING BLOCK 1 LOTS  
1 THROUGH 24 AND BLOCK 2 LOTS 1 THROUGH 18**

# EXHIBIT C

PETITION TO ESTABLISH A RURAL SPECIAL IMPROVEMENT DISTRICT  
(RSID)

SECTION D

EQUAL AMOUNT; AMOUNT TO BE SPREAD BETWEEN ALL LOTS WITHIN LONG  
VIEW SUB. 2<sup>ND</sup> FILING.

# EXHIBIT D

## PETITION TO ESTABLISH A RURAL SPECIAL IMPROVEMENT DISTRICT (RSID)

### SECTION C

#### ESTIMATED ANNUAL MAINTENANCE COST

##### FALL MAINTENANCE:

ACTIVITY	ESTIMATED COST
MOWING	\$100.00
WEED CONTROL	\$ 50.00

##### WINTER MAINTENANCE:

ACTIVITY	ESTIMATED COST
NONE	\$0.00

##### SPRING MAINTENANCE

ACTIVITY	ESTIMATED COST
MOWING	\$100.00
WEED CONTROL	\$ 50.00

##### SUMMER MAINTENANCE

ACTIVITY	ESTIMATED COST
MOWING	\$100.00
WEED CONTROL	\$ 50.00

TOTAL ESTIMATED ANNUAL MAINTENANCE COST: \$450.00

# EXHIBIT D-1

PETITION TO ESTABLISH A RURAL SPECIAL IMPROVEMENT DISTRICT (RSID)

## SECTION C ESTIMATED ANNUAL MAINTENANCE C

ACTIVITY;	ESTIMATED COST
FILLING WATER TANK (DRY HYDRANT)	\$250.00
ACTIVITY;	ESTIMATED COST
WEED CONTROL; (ANNUAL)	\$100.00

TOTAL ESTIMATED ANNUAL MAINTENANCE COST: \$350.00